



LABOUR TRAINING

LOCAL PARTIES

Get involved in developing policy

Housekeeping



- Introductions
- Closed captions (subtitles) are available – please click CC on the Zoom menu bar
- Please use the chat to introduce yourself, your role and where you live
- Use the chat to share ideas and ask each other for advice, or the Q&A function for questions of panel

Aim



By the end of this session, we hope you'll be more familiar with how the Party develops policy, and how you can get involved.



**In order to
achieve this
we will be
covering:**

- The National Policy Forum
- The NPF consultation
- Making a submission
- Other ways to get involved
- Socialist Societies and trade unions

Quick Poll

How long have you been a member?

1. Less than 3 months
2. 3 - 12 months
3. 1 - 3 years
4. Over 3 years

The policy-making process



LABOUR'S
**NEW DEAL
FOR WORKERS**

**MAKING BRITAIN THE
BEST PLACE TO WORK**

Labour



**Security
Prosperity
Respect**

Labour



VOTE LABOUR TO
TACKLE THE
CLIMATE CRISIS

Vote Labour



HOW WOULD
LABOUR
FUND THIS?

By ending tax exemptions for private schools. So every child has equal access to the best level of education.

STRONGER FUTURE TOGETHER
Labour

Labour



**Labour would
cut VAT on
household energy
bills this winter.**

Labour



**SIX MILLION
PEOPLE ARE
WAITING FOR
NHS CARE**

PLEASE
Take an
NHS
Number

Labour

A man in a dark suit and red tie is seated at a table, looking out of a window. He is holding a pen over a white cup. A glass of water is also on the table. The background is slightly blurred, showing another person's head in the foreground.

“The strength of our movement is its diversity, and the breadth and depth of our collective knowledge, passion and insight. It is by working together that we will develop the ideas that underpin our vision of a new Britain – one that guarantees security, prosperity and respect for all.”

The policy process

- Cycle runs between elections
- National Policy Forum – 150+ reps from across Party, inc. CLPs, trade unions, socialist societies, MPs and councillors
- Individuals and groups make submissions to the process detailing their views
- Annual Conference votes



 **Labour** policy forum
Have your say in the development of Labour policy

The Policy Commissions



**Better jobs and
better work**



**Public services
that work from
the start**



**A future where
families come
first**



**Safe and secure
communities**



**A green and
digital future**



**Britain in
the world**

The Consultation Documents

Policy documents are produced each year to inform the consultation, including:

- Some background policy information.
- Questions to help guide local discussions and for those reading to focus on the issue.
- Details on how members can respond and guidance on local events.



Questions:

1. What lessons can we learn from this crisis to ensure the health and social care services are better prepared for the pressures it will face in the future?
2. What drivers should underpin our approach the healthcare policy development as we build towards the next General Election?
3. What drivers should underpin a new settlement for social care?
4. How can we ensure that health and care workers are properly valued and rewarded?
5. Which areas of health and social care policy should the Labour Party prioritise for policy development as we build towards the next General Election?

General Secretary, the Labour
London, SW1E 6QT.

Making a submission



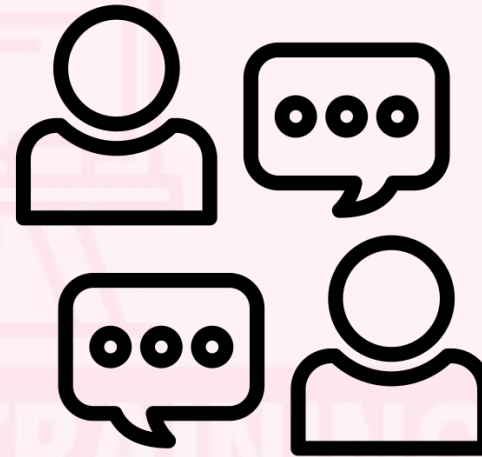
How to respond

There are several ways to give your views on the policy documents:



[www.policyforum
.labour.org.uk](http://www.policyforum.labour.org.uk)

Regional events



Local Labour
consultation events

@LabPolicyForum
#LabourPolicy



Online members' events

Six roundtables took place during this consultation – look out for future similar events.

**A Green and Digital
Future**
31 May at 5pm

**Better Jobs and
Better Work**
8 June at 3pm

**Safe and Secure
Communities**
16 June at 3pm

**Public Services That
Work From The Start**
20 June at 5pm

**A Future Where
Families Come First**
28 June at 4pm

Britain in the World
5 July at 6pm

Making a submission

A policy submission is simply your ideas or points of view written down – a few sentences or a longer document. You can even submit video!

When you submit online, choose which Policy Commission and which policy areas it relates to. Eg 'Safe and Secure Communities Commission', then 'Policing' policy.

You can email longer submissions to policyforum@labour.org.uk.



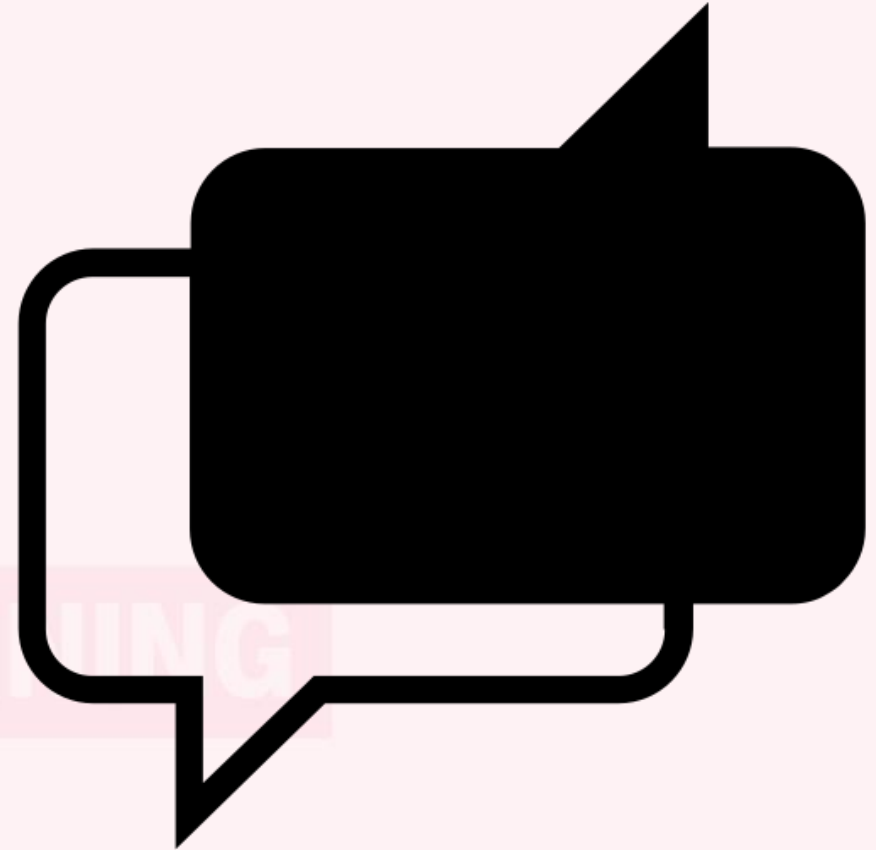
Commenting and replying



Once someone has made a submission, other members can make comments and debate the ideas. Through this discussion, , ideas can be developed and built on, informing the Party's policy programme.

NPF Representatives go through submissions, and may make comments too.

- Remember: submissions are public!
- Be polite and courteous
- Encourage others to get involved



Other ways to get involved



LABOUR'S
**NEW DEAL
FOR WORKERS**

**MAKING BRITAIN THE
BEST PLACE TO WORK**

Labour



**Security
Prosperity
Respect**

Labour





VOTE LABOUR TO
TACKLE THE
CLIMATE CRISIS

Vote Labour



HOW WOULD
LABOUR
FUND THIS?

By ending tax exemptions for private schools. So every child has equal access to the best level of education.



STRONGER FUTURE TOGETHER
Labour

Labour





**Labour would
cut VAT on
household energy
bills this winter.**

Labour



**SIX MILLION
PEOPLE ARE
WAITING FOR
NHS CARE**



PLEASE
Take an
NHS
Number

Labour



Annual Conference

- Annual Conference is the Party's **sovereign policy-making body**
- The NPF Annual Report is an outline of the policy direction that the Party has adopted following on from that year's consultation
- It is not the manifesto, but part of the policy development process over four years



Annual Conference Motions

- CLPs and Affiliates submit either a policy motion or a party rule change to Conference
- Policy motions are grouped by subject (e.g. NHS, schools) which are voted on in a priority ballot
- Through this ballot six subjects are selected by CLPs, and a further six selected by affiliates. Compositing meetings are then held for all these where delegates agree on a final motion in that subject area
- These motions are then discussed and debated on conference floor and, if successfully passed, become a part of our policy platform

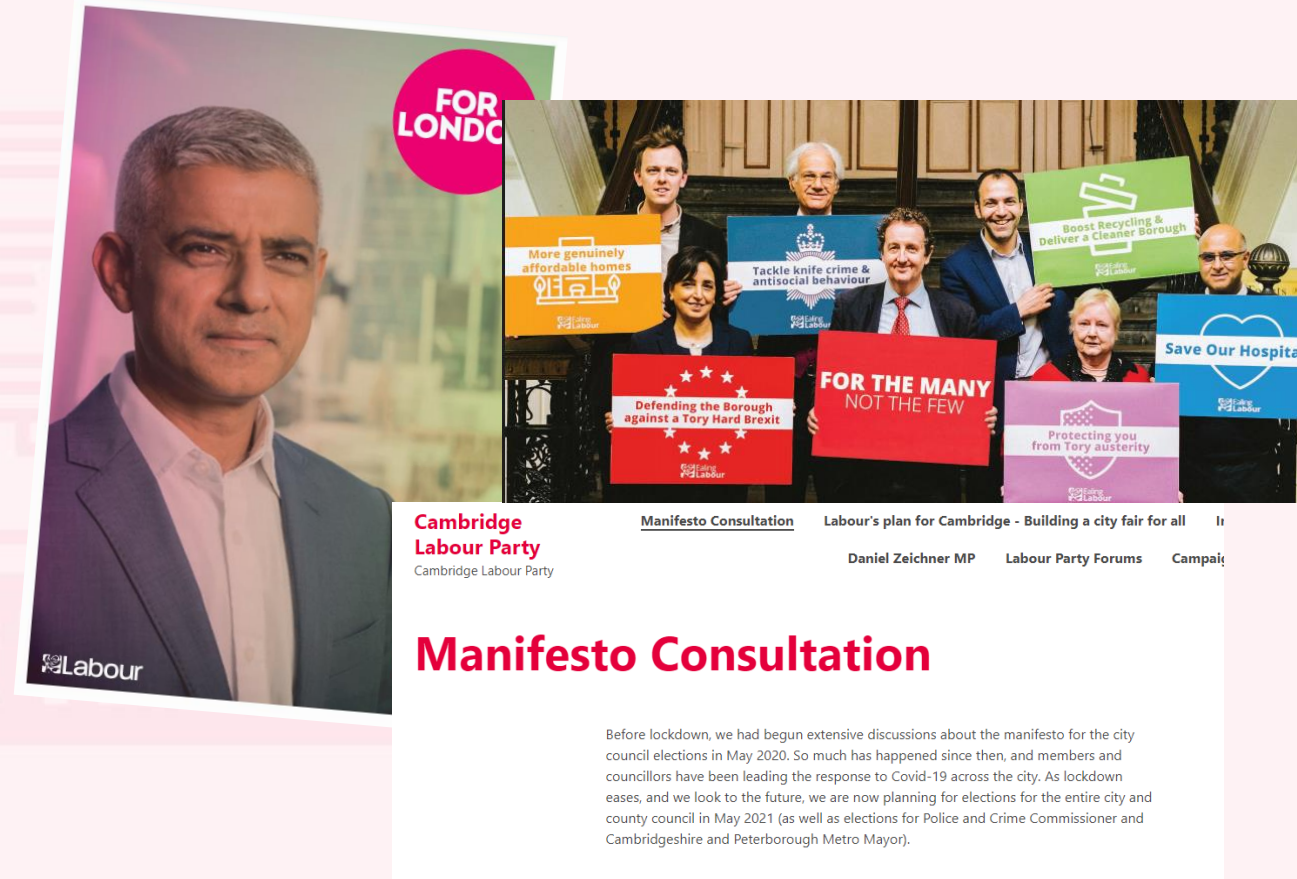
Local and regional policy



It's not just the formal processes for the manifestos for the Parliaments in Westminster, Scotland and Wales.

Our Metro Mayors, Police & Crime Commissioners and local government candidates will also need great ideas for their policies. Look out for consultations near you.

Local parties often have debates and external speakers on policy too.



Unions & Socialist Societies



Got a particular interest or expertise?



Our training offer



- Wide range of content – from our history to technology
- Online video training like this at labour.org.uk/training
- e-learning at achieve.labour.org.uk
- Face-to-face training in your local area





LABOUR TRAINING

LOCAL PARTIES

Thank you

training@labour.org.uk

labour.org.uk/training

achieve.labour.org.uk